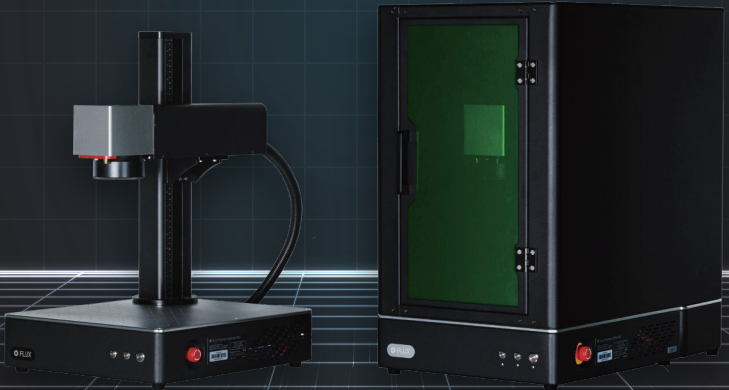




Promark

Precision Redefined. Speed Elevated.

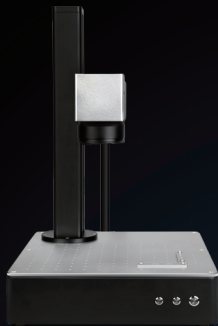




Founded in 2014, FLUX began its journey in Silicon Valley, USA, raising over US\$2 million from global Kickstarter backers in its debut year. With more than 190 partners across 70+ countries, FLUX has empowered creators worldwide — from artists and educators to small businesses — with innovative and accessible laser technology.

As FLUX's metal marking solution, Promark combines high accuracy with a compact, intuitive design.

It supports materials like stainless steel, aluminum, brass, and titanium, as well as select plastics and acrylics. Whether you're crafting fine jewelry, customizing tools, or marking industrial parts, Promark delivers the precision and power you need to elevate your projects with ease.



Promark

Desktop Fiber Laser

- ✓ 3D Engraving
- ✓ Camera Preview
- ✓ 10000mm/s Max Speed
- ✓ 220 x 220 Working Area

Model	D20	D30	D50
Laser	Fiber 20W	Fiber 30W	Fiber 50W
Dimension	374 x 490 x 597 mm (14.72" x 19.29" x23.5")		
Weight	18.2 kg		
Beam Spot	0.03 mm (0.001")		
Wavelength	1064 nm		
Max Speed	10000 mm/s (393.7"/s)		
Work Area	220 x 220 mm (8.66" x 8.66")		
Software	Beam Studio / LightBurn		
Power	110 / 220 V		
Focus Mode	Camera Preview / Red Light Preview / Dynamic Focus		
Compatible File	SVG / DXF / AI / PDF / BMP / JPG / PNG		
Metal Material	Stainless steel, Gold, Silver, Platinum, Aluminum, Titanium, Brass, Iron		
Non-Metal Material	Opaque Acrylic, Rock, Iron, Cement, Plastic		

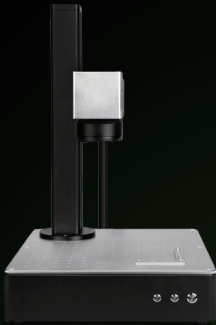


Promark (Safe+)

Desktop Fiber Laser

- ✓ 3D Engraving
- ✓ Camera Preview
- ✓ 10000mm/s Max Speed
- ✓ 220 x 220 Working Area
- ✓ Fully Enclosed Design

Model	D20	D30	D50
Laser	Fiber 20W	Fiber 30W	Fiber 50W
Dimension	374 x 532 x 625 mm (14.72" x 20.94" x 24.61")		
Weight	34.6 kg(76.3 lbs)	33.1 kg (73.0 lbs)	33.1 kg (73.0 lbs)
Beam Spot	0.03 mm (0.001")		
Wavelength	1064 nm		
Max Speed	10000 mm/s (393.7"/s)		
Work Area	220 x 220 mm (8.66" x 8.66")		
Software	Beam Studio / LightBurn		
Power	110 / 220 V		
Focus Mode	Camera Preview / Red Light Preview / Dynamic Focus		
Compatible File	SVG / DXF / AI / PDF / BMP / JPG / PNG		
Metal Material	Stainless steel, Gold, Silver, Platinum, Aluminum, Titanium, Brass, Iron		
Non-Metal Material	Opaque Acrylic, Rock, Iron, Cement, Plastic		



Promark

MOPA Laser

- ✓ 3D Engraving
- ✓ Color Engraving
- ✓ Camera Preview
- ✓ 10000mm/s Max Speed
- ✓ 220 x 220 Working Area

Model	M20	M60	M100
Laser	MOPA 20W	MOPA 60W	MOPA 50W
Dimension	374 x 490 x 597 mm (14.72" x 20.94" x 24.61") (20W) 451 x 574 x 641 mm (17.75" x 22.59" x 25.23") (60/100W)		
Weight	19.2 kg	22.2 kg	23.2 kg
Beam Spot	0.03 mm (0.001")		
Wavelength	1064 nm		
Max Speed	10000 mm/s (393.7"/s)		
Work Area	110 x 110 (20W)	220 x 220 mm (60/100W)	
Software	Beam Studio / LightBurn		
Power	110 / 220 V		
Focus Mode	Camera Preview / Red Light Preview / Dynamic Focus		
Compatible File	SVG / DXF / AI / PDF / BMP / JPG / PNG		
Metal Material	Stainless steel, Gold, Silver, Platinum, Aluminum, Titanium, Brass, Iron		
Non-Metal Material	Opaque Acrylic, Rock, Iron, Cement, Plastic		



Promark (Safe+)

MOPA Laser

- ✓ 3D Engraving
- ✓ Color Engraving
- ✓ Camera Preview
- ✓ 10000mm/s Max Speed
- ✓ 220 x 220 Working Area
- ✓ Fully Enclosed Design

Model	M20 (Safe+)
Laser	MOPA 20W
Dimension	374 x 532 x 625 mm (14.7" x 20.9" x 24.6")
Weight	34.1 kg (75.2 lbs)
Beam Spot	0.03 mm (0.001")
Wavelength	1064 nm
Max Speed	10000 mm/s (393.7"/s)
Work Area	110 x 110 mm (4.33" x 4.33")
Software	Beam Studio / LightBurn
Power	110 / 220 V
Focus Mode	Camera Preview / Red Light Preview / Dynamic Focus
Compatible File	SVG / DXF / AI / PDF / BMP / JPG / PNG
Metal Material	Stainless steel, Gold, Silver, Platinum, Aluminum, Titanium, Brass, Iron
Non-Metal Material	Opaque Acrylic, Rock, Iron, Cement, Plastic

Promark Desktop Fiber Laser



Promark MOPA Laser



CONTACT US



FLUX Inc.

9F, No. 465, Sec. 6, Zhongxiao E. Rd.,
Nangang Dist., Taipei, Taiwan



OFFICIAL



INSTAGRAM



FACEBOOK