

Specifications	
Imprintable material	Gold, silver, copper, platinum, brass, aluminium, iron, stainless steel, etc. (Vickers hardness [HV] of the printing surface must be 200 or less.)
Loadable material size	Maximum 100 mm (width) x 200 mm (length) x 40 mm (thickness), or 200 mm (width) x 100 mm (length) x 40 mm (thickness) [(3.9 in. x 7.9 in. x 1.5 in.) or (7.9 in. x 3.9 in. x 1.5 in.) With vise: Maximum 20 mm (0.8 in.) thickness
Printing area	80 mm x 80 mm (3.1 in. x 3.1 in.)
Resolution	529 dpi (High resolution), 353 dpi (Photo), 265 dpi (Text), 1058 dpi (Vector)
Printing direction	Unidirectional or bidirectional imprinting (Selectable with Windows driver)
Printing speed (Default)	50 mm/sec (1.9 in./sec) Photo, 33 mm/sec (1.2 in./sec) High resolution/Text, 24 mm/sec (0.94 in./sec) Vector
Connectivity	USB (compliant with Universal Serial Bus Specification Revision 1.1)
Power requirements	Dedicated AC adapter: AC 100V to 240V ±10% 50/60Hz Machine: DC19V 1.6A
Power consumption	Approx. 24W
Acoustic noise level	Under 70 dB (A)
Environmental	Temperature: 10 to 30°C (50 to 86°F), Humidity: 35 to 80% (no condensation)
Dimensions	286 mm (W) x 383 mm (D) x 308 mm (H) (11.3 in. (W) x 15.1 in. (D) x 12.2 in. (H))
Weight	10.8 kg (23.8 lb.)
Included items	AC adapter, power cord, head caps, center vise, adhesive sheet, test-use printing material, USB cable, Roland software CD-ROM, and user's manual, etc.

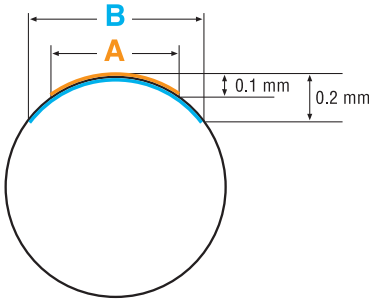
System requirements for included software: METAZASudio	
Operating system	Windows® 8/8.1 Professional (32-bit or 64-bit); Windows® 7 Professional (32-bit or 64-bit); Windows Vista® Ultimate (32-bit), Business (32-bit or 64-bit) or Home Premium (32-bit)
CPU	Pentium 4 3.0 GHz or more recommended
RAM	512MB or more recommended
Video card and monitor	16 bit colors (High Color) with a resolution of 800 x 600 or more recommended
Free hard-disk space	25MB
Optical drive	CD-ROM drive

Options		
	Model	Description
Head unit and head caps for replacement	MPH-90	Head unit x 1 and head caps x 4 pcs.
Replacement head caps for round surfaces	CAP-HEAD MPX-90	5 pcs.
Replacement durable head caps for flat surfaces	DURABLE HEAD-CAP MPX, FLAT SURFACE	5 pcs.

Conditions when imprinting curved surfaces

Choose material when imprinting on a curved surface taking into consideration the following limitations. These figures show the possible imprinting area on a curved surface that the MPX-90M can imprint with the stylus and the diameter of the cylinder when the head cap (CAP-HEAD MPX-90) is attached to the head unit. However, these limitations do not assure the quality of the photographic image.

Diameter of cylindrical material	Recommended printable area (A)	Area reached by the marking pins (B)
10 mm (0.3 in.)	2.0 mm (0.079 in.)	2.8 mm (0.11in.)
20 mm (0.7 in.)	2.8 mm (0.11 in.)	4.0 mm (0.16 in.)
30 mm (1.1 in.)	3.4 mm (0.14 in.)	4.8 mm (0.19 in.)



Roland reserves the right to make changes in specifications, materials or accessories without notice. Your actual output may vary. For optimum output quality, periodic maintenance to critical components may be required. Please contact your Roland dealer for details. No guarantee or warranty is implied other than expressly stated. Roland shall not be liable for any incidental or consequential damages, whether foreseeable or not, caused by defects in such products. All trademarks are the property of their respective owners. Roland DG Corporation has licensed the MMP technology from the TPL Group.

MPX-90M
METAZA



Desktop Impact Printer
for Marking of UDI Barcodes



New Marking Device Ensures Easy Tracking and Traceability of Your Medical Instruments

The MPX-90M impact printer marks two-dimensional DataMatrix barcodes as small as 1 mm on a wide variety of medical instruments such as forceps, tweezers, scalpels and other surgical tools. This proven technology imprints unique device identification (UDI) numbers quickly and affordably, allowing for easy tracking and traceability and resulting in better patient safety. In addition to 2D DataMatrix barcodes, the MPX-90M is capable of imprinting numbers, text, logos and graphics on virtually any metal surface.*¹ Designed for ease of use, it comes with its own software for producing precise, durable imprints that remain readable throughout the product lifecycle.*²

*1 Vickers hardness (HV) of the surface of imprintable materials must be 200 or less. *2 Computer and barcode scanner required for a complete UDI system.

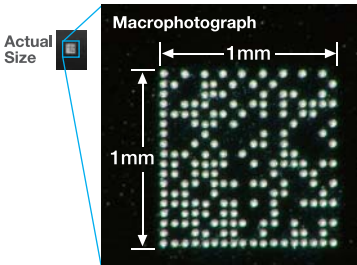


PRECISION

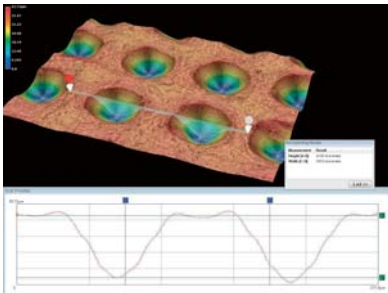
High-Speed Marking with Roland's Dot Impact Technology

The MPX-90M uses a durable diamond-tipped stylus to directly imprint on titanium, stainless steel and other hard metals. Engineered for speed and precision, the MPX-90M can quickly imprint 26 digits of information inside an area as small as one square millimeter.*³ Because it does not burn or remove material on impact, the MPX-90M generates no odors or debris, and leaves the marked area protected from corrosion. No daily maintenance is required.

*3 Quality is determined by the resolution of the barcode scanner.



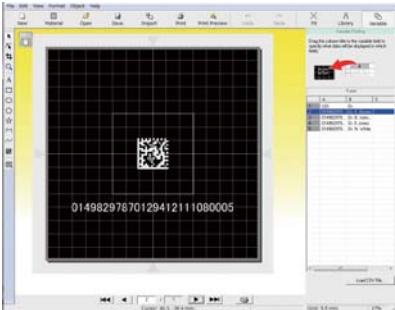
▲ Precision direct marking with the MPX-90M



▲ Consistent dot size and depth are hallmarks of MPX-90M imprinting

VERSATILE

Dedicated Software Marks 2D DataMatrix Barcodes, Text and Logos to Identify and Brand Devices



▲ Included software, METAZAStudio

METAZAStudio includes a 2D DataMatrix barcode feature. To create a unique barcode, simply select the barcode icon from the METAZAStudio's main screen and enter the appropriate UDI numbers. The software does the rest, creating a 2D DataMatrix barcode that can be output using the MPX-90M. METAZAStudio also imports CSV spreadsheet files for variable data printing. This allows you to quickly and easily add a unique 2D DataMatrix barcode to each device in a series. Support for jpg, bmp and Adobe Illustrator 8 file formats allow you to import logos and other custom branding elements as well.

• Import CSV files for variable data printing



UDI	Doctor	Specialty
01498297870129412111080005	Dr. K. McCoy	Neurosurgery
01498297870129412111080006	Dr. B. Johnson	Orthopaedics
01498297870129412111080007	Dr. E Jones	Obstetrics and Gynecology
01498297870129412111080008	Dr. N. White	Pediatric Surgery

• Imprint logos and other graphics to brand devices

Logo



COMPACT & EASY TO USE

Setup is Easy with the Included Vise and Built-In Laser Pointer

With the MPX-90M, no special training is required. The included METAZAStudio software instantly converts your numerical data to 2D DataMatrix barcodes that meet GS1 and other 2D DataMatrix formats. Getting started is as simple as firmly securing the item to be marked in the included vise, and then using the built-in laser pointer to locate the center of the material to ensure the graphic is imprinted accurately. With its ease of use, compact footprint and energy-efficient design, the MPX-90M is the ideal solution for small office settings.



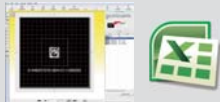
▲ Easily secure items for marking to the machine's work table



▲ Confirm the correct marking location with the built-in laser pointer

Production is Easy

Create Data



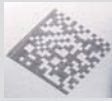
Import or create your data using the included METAZAStudio software

Secure the item



Using the vise, securely affix the item to the work table and position it for imprinting using the built-in laser pointer

Imprint



Directly mark the instrument or tool using the MPX-90M

Tracking



Read the barcode with a barcode scanner*³ to verify proper tracking and traceability

*3 A separate barcode scanner is required for tracking.

Roland DG — A World-Leading Provider of Digital Devices

Roland DG Corporation is a leading worldwide manufacturer of precision digital technology, including wide-format inkjet printers, milling and engraving machines, vinyl cutters, 3D scanners, a jewelry wax model maker and impact printers. Every Roland DG customer receives legendary Roland reliability and world-class service and support. Training is available through Roland DG Academy. Roland DG products are available in 133 countries worldwide. For more information, visit: www.rolanddg.com.



MPX-90M METAZA

Desktop Impact Printer for Marking of UDI Barcodes



*Computer not included.