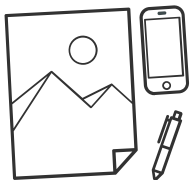




## More Flexibility, More Opportunity

Take object customisation to new heights with the VersaOBJECT LO Series of UV flatbed printers. Digital UV printing has never been more versatile and the LO Series is the perfect solution for customising boards or objects up to 242 mm in height and can even handle irregular surfaces.

Visit [www.rolanddg.eu](http://www.rolanddg.eu) for further information



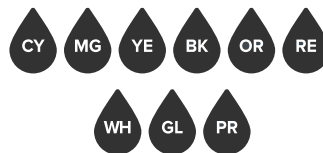
### IMPRESSIVE PRINT CAPABILITY

Print onto a virtually limitless range of flexible and rigid substrates and objects.



### HIGH PRODUCTIVITY

High-speed object printing is achieved using two print heads arranged in a staggered formation.



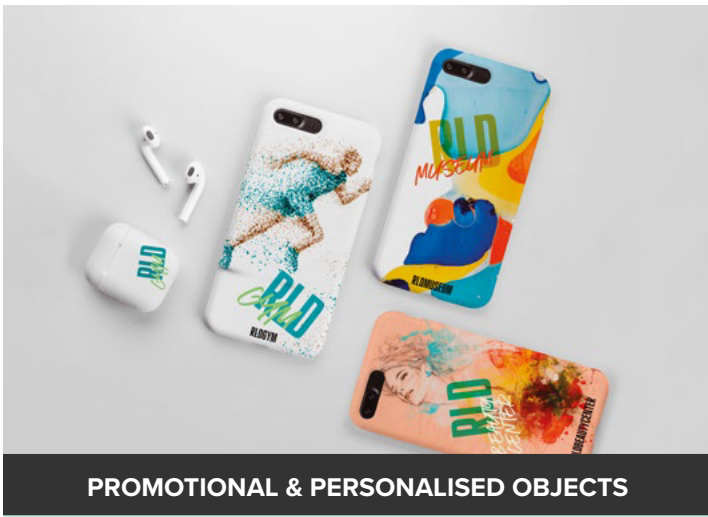
### FINE PRINT QUALITY

Delight your customers with stunning quality colour-accurate prints, with ECO-UV EUV5 ink.



### DISTANCE MODE

Print directly onto irregular or curved objects with a high degree of accuracy.



PROMOTIONAL & PERSONALISED OBJECTS



SIGN AND GRAPHICS



ITEMS WITH CURVED SURFACES



INDUSTRIAL

Specifications

Model		LO-300-F2	LO-640-F3
Printing method		Piezo ink-jet method	
Attachable objects to be printed on	Width	Max. 762 mm (30 in.)	Max. 1,625 mm (64 in.)
	Thickness/height	242 mm (9.5 in.)	242 mm (9.5 in.)
	Weight	Max. 100 kg / m <sup>2</sup>	Max. 100 kg / m <sup>2</sup>
Maximum Printing Width/Length		656 (W) x 1,450 (L) mm (25.84 x 57.0 in.)	1,520 (W) x 2,450 (L) mm (59.8 x 96.4 in.)
Ink cartridges	Type	ECO-UV (EUV5P) 750 ml pouch	
	Colours	Cyan, Magenta, Yellow, Black, Red, Orange, White, Gloss, Primer	
Ink configurations		CMYKReOrWhGl, CMYKReOrWhWh, CMYKReOrWhPr, CMYKReWhGlPr, CMYKWhWhGlPr, CMYKWhGlWhGl, CMYKCMYK	
Printing resolution (dpi)		Maximum 1,200 dpi	
Connectivity		Ethernet (100BASE-TX/1000BASE-T, automatic switching)	
Dimensions		2,037 (W) x 2,430 (D) x 1,560 (H) mm (80.2 in. x 95.7 in. x 61.5 in.)	2,901 (W) x 3,457 (D) x 1,560 (H) mm (114.3 in. x 136.2 in. x 61.5 in.)
Included items		Software (VersaWorks, Roland DG Connect Hub), power cord, cleaning liquid, drain bottle, User's Manual, etc.	

Specifications, designs and dimensions listed may be subject to change without notice.



Enjoy the peace of mind of having one of the most comprehensive warranty packages in the industry, included with the LO Series.

Roland DG reserves the right to make changes in specifications, materials or accessories without notice. Actual output may vary. For optimum output quality, periodic maintenance to critical components may be required. Please contact your Roland DG dealer for details. No guarantee or warranty is implied other than expressly stated. Roland DG shall not be liable for any incidental or consequential damages, whether foreseeable or not, caused by defects in such products. PANTONE® is the property of Pantone LLC. All other trademarks are the property of their respective owners. Reproduction or use of copyrighted material is governed by local, national, and international laws. Customers are responsible for observing all applicable laws and are liable for any infringement. Roland DG Corporation has licensed the MMP technology from the TPL Group.

AUTHORISED DEALER: